

ANALYSIS OF NZLGA LAVENDER OILS

Data file:C:\HPCHEM\1\DATA\LAV04J\031F3101.D

Sample Name:patmoy Grosso 1

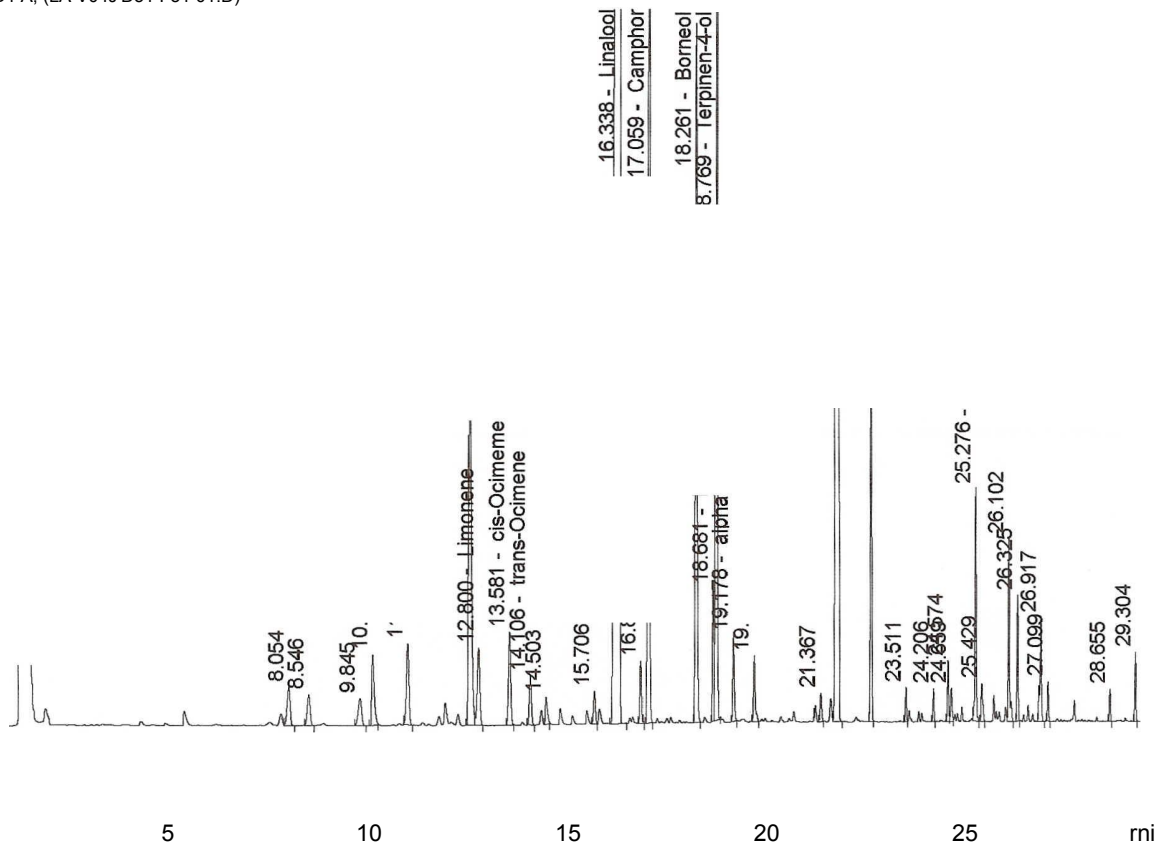
Sample Info : Whitebay Lavender sample 1 Grosso oil, '04.

Injection Date: 8/07/2004 06:51:23 p.m.
 Acq. Operator: Acq. ngp
 Method: Analysis LGA041.M
 Method: Seq Line: C:\HPCHEM\1\METHODS\LGA041.M 31
 Vial # : Injection 31

Method Info : NZLGA LAVENDER ANALYSIS, 2004.

FID1 A, (LA V04JD31 F31 01.D)

pA



Signal 1: FID1 A,

Peak	RT [min]	Area	Area %	Compound Name
1	8.054	76.306	0.436	
2	8.546	58.971	0.337	
3	9.845	61.009	0.349	
4	10.160	117.288	0.670	3-Octanone
.....	11.029	133.795	0.765	
6	12.588	585.934	3.350	Cineole
7	12.800	133.215	0.762	Limonene
8	13.581	137.764	0.788	cis-Ocimeme
9	14.106	67.366	0.385	trans-Ocimene
10	14.503	38.679	0.221	
11	15.706	40.769	0.233	
HP6890A	8/07/2004	10:31:20 p.m.	ngp	Page 1 of 2